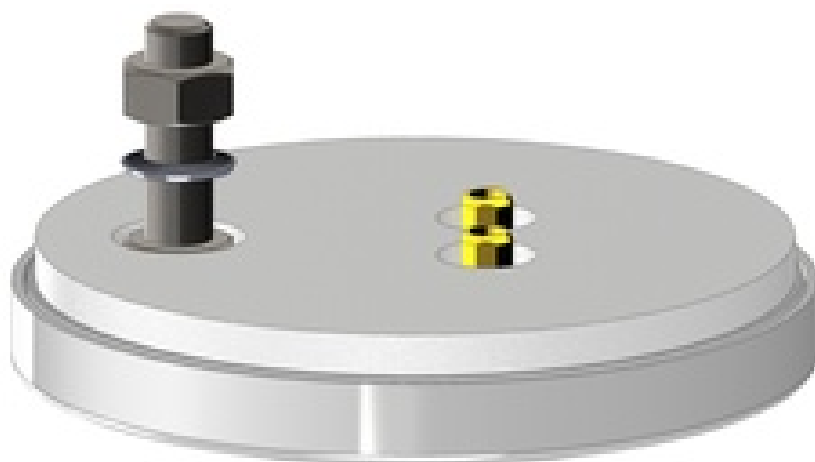


# Antenna-Railway-Indoor-01-2W

## WiFi Antenna 2x2 MIMO



### Features

- MIMO WiFi 2.4 / 5 GHz
- EN50155 certified
- EN45545 certified

The Antenna-Railway-Indoor-01-2W is an indoor train antenna with certification according to railway standard EN 50155 and EN45545 for mounting in trains and vehicles. The antenna supports MIMO WiFi 2.4 and 5 GHz and is suited for applications as passenger WiFi or data acquisition. It is vertical and cross polarized and can be used in a temperature range from -40°C to +80 °C.

### Frequencies

- 2400 - 2500 MHz
- 5180 - 5835 MHz

## Specifications

Supported Technologies	2x2 MIMO WiFi 2.4 GHz 2x2 MIMO WiFi 5 GHz
WiFi	Frequencies: 2400 - 2500 / 5180 - 5835 MHz Gain: 8,4 dBi @ 2400 - 2500 MHz / 9,1 dBi @ 5180 - 5835 MHz VSWR: <=1.8 Impedance: 50 Ohm Radiation: vertical / horizontal Cables: 2x 3 m (Ant-Cable-Railway-01-SMAm-TNCm-3) Connectors: 2x SMA(f)
Certifications	EN 50155, IEC 61373, EN 45545-2, ECE R118, RoHS, REACH
Protection level	IP64
Temperature range	-40°C to +80°C
Environment	Indoor
Color	RAL 7035 light gray
Dimensions	23 x 96 mm (Height x Diameter)
Mounting	1x M8 bolt
Order number	Antenna-Railway-Indoor-01-2W

**NetModule AG**  
Maulbeerstrasse 10  
3011 Bern

T +41 31 985 25 10  
F +41 31 985 25 11

Switzerland

**NetModule GmbH**  
Frankfurter Strasse 92  
65760 Eschborn

T +49 6196 77 99 79 0  
F +49 6196 77 99 79 9

Germany